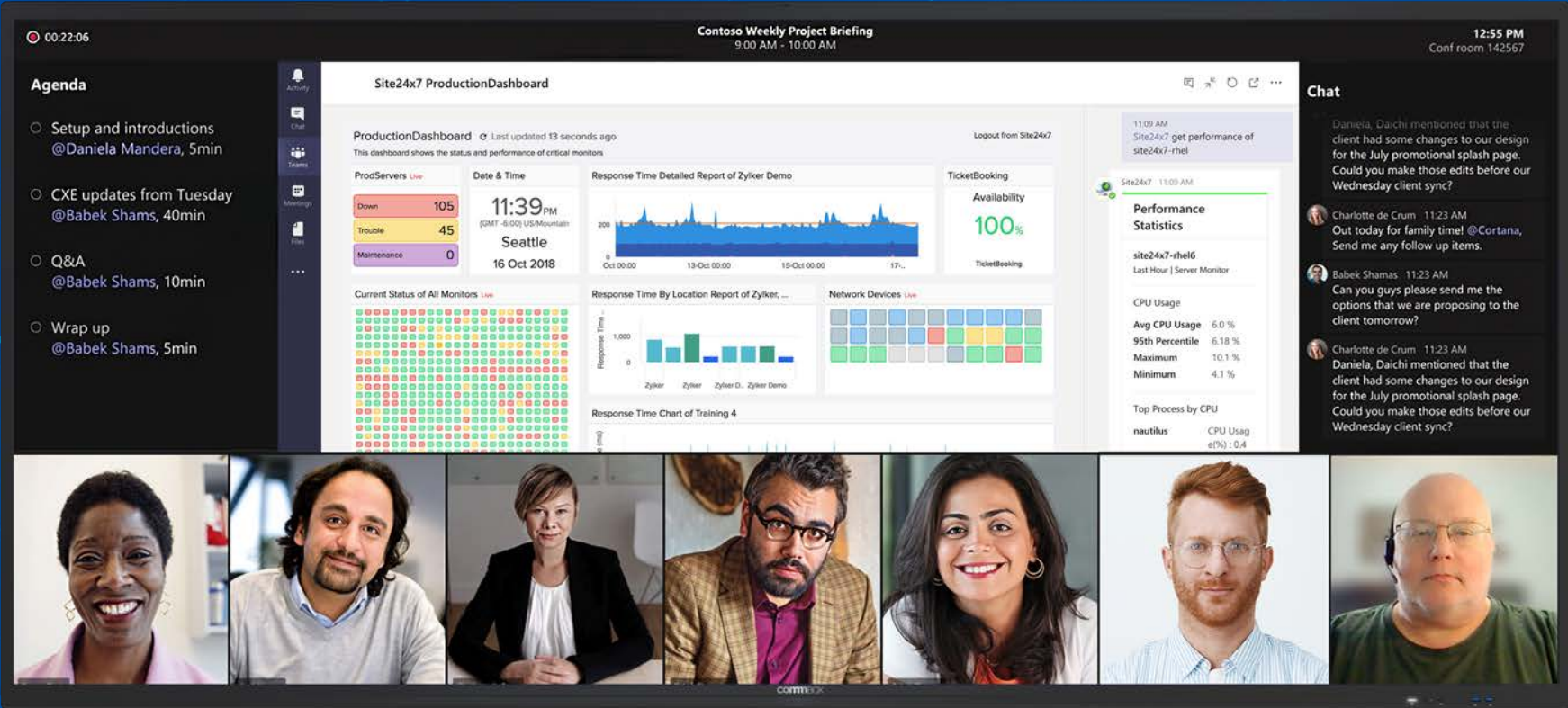


# commBOX



# HORIZON

Ultra-wide Interactive Touch Screens

92" | 105" ASPECT RATIO: 21:9

# commBOX HORIZON

INTRODUCING THE NEXT GENERATION OF INTELLIGENT  
ULTRA-WIDE INTERACTIVE TOUCHSCREENS.

92" | 105" ASPECT RATIO: 21:9



Expand your view and enhance your experience with 92" and 105" Horizon widescreen meeting room solutions. The expansive rich 5K ultra-wide interactive screen, in two convenient sizes, offers a unique meeting 21:9 display in design, giving you 33% more usable screen space, allowing enhanced accessibility and flow-on productivity within the hybrid working environment.

Now with CommBox OS lite powered by Android 13, the hyper fast chipset offers the ultimate in screen interaction and advanced touchscreen experience.



Microsoft Teams Front Row layout

## KEY FEATURES

- **Enjoy the Microsoft Teams Rooms Front Row** layout for optimal hybrid collaboration.
- **Collaborate and Brainstorm** with the CommBox Whiteboard on an infinite canvas.
- **Easily Annotate** over any content, allowing for quick capture and sharing of meeting notes.
- **Seamless Writing Experience** with Microsoft Ink integration.
- **Wirelessly Share Content** from personal devices using CommBox Connect, supporting Miracast with Touchback, Chromecast, AirPlay, or the app.
- **Effortlessly Manage** your devices remotely with CommBox Manage, which includes a 7-year licence.

## MICROSOFT SIGNATURE TEAMS ROOMS SOLUTION

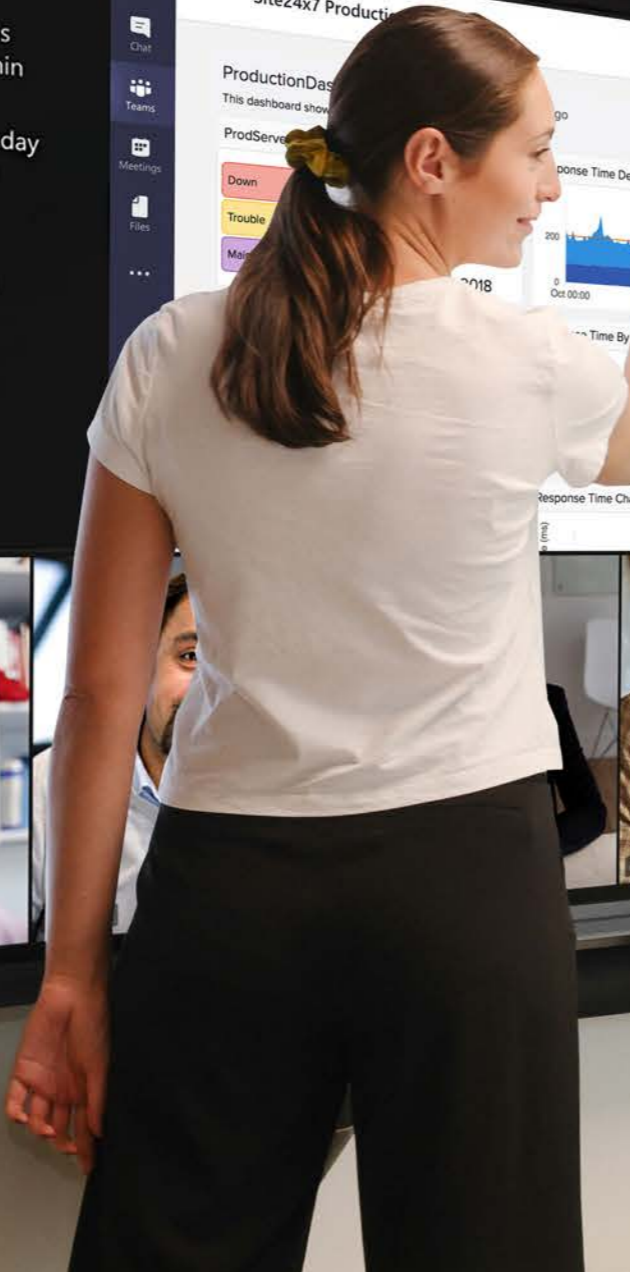
Tailored for Microsoft Teams Rooms and Zoom Rooms, the Horizon range delivers a Signature Meeting Experience designed to elevate your organisations leadership communication.

With expansive deliverability you can transform your meeting space. From huddle rooms to large auditoriums & conference rooms, improve meeting collaborator with a rich and collaborative Teams meeting experience that's simple to use, deploy, and manage.

Designed for flexible work and strong remote communication and participation...









# EXPAND YOUR TEAMS MEETING EXPERIENCE INTO A CINEMATIC WIDESCREEN WORKSPACE

## Ultimate Teams Rooms Experience

The CommBox Horizon range is intentionally designed to complement the preferred viewing option Microsoft Teams Front Row Layout.

## Improved Multitasking

Meeting Room screens often serve multiple purposes, including agenda presentations, video feeds, presentation materials and shared documents. With ample space on the 21:9 screen, either on the 105" or 92", switching between presentations and viewing multiple documents is easy.

## Better Collaboration

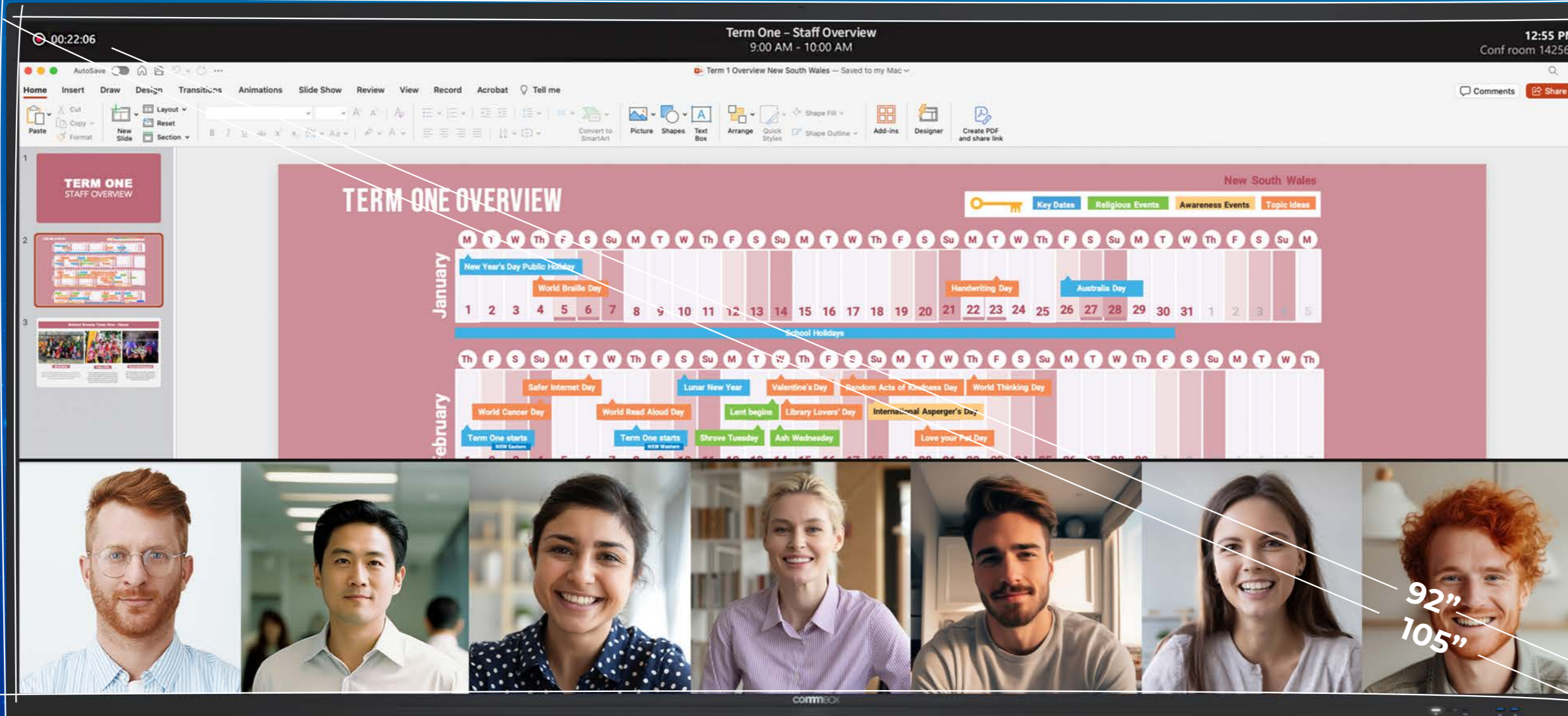
The Horizon ultra-wide screen with CommBox OS lite provides a broader canvas for whiteboarding. The enhanced face-to-face balanced interaction on screen improves the overall collaboration experience. With Microsoft Ink integration, collaborating and annotating on Microsoft docs including PowerPoint and Word is effortless, clear and effective.

## Enhanced Accessibility

The aspect ratio of Horizon is 21:9 allowing for a more extensive, broader and clearer display of meeting content. Presentations, documents, and videos are automatically more visible to all participants, even for those seated at the sides of a large room or auditorium style meeting space.

## Future Proofing

As the demand for meeting room solutions continue to evolve, Horizon ultra-wide screens provide a beneficial solution, adapting easily to the changing needs of technology.



## KEY SPECIFICATIONS

- 5K Crystal Clear Bright 400nit Display with anti-glare for optimal viewing with an additional 33% more viewing space than a 16:9 86" screen for 105" Horizon
- Available in 105" and 92" 21:9 aspect ratio
- CommBox OS lite powered by Android 13
- Powerful compute - 8GB RAM / 64G ROM
- Dual Quad Core Processor
- 2x 20W Speakers + 1x 15W Subwoofer for premium sound
- 2x USB-C In
- 50 point touch with pen tip, and finger differentiation and palm rejection
- Gesture support
- Built-in microphone with 8 metre pick-up
- Available USB ports at the top of the screen
- Removable WIFI 6 and Bluetooth 5



92"  
105"



## BUILT WITH PREMIUM HARDWARE

### Premium Touch Display

Ultra-high crystal clear 5120 x 2160px higher pixel density with the 21:9 aspect ratio infrared recognition.

### Crystal Clear Visuals

CommBox advanced technology ensures every pixel delivers a crisp, bright & clear image with 5K resolution.

### Deeper True Blacks

The high contrast colour spectrum enables more realistic, clear, clean images offering 10bit display colours (1.07) and high contrast 90% colour gamut.

### Anti-Glare Technology

Whether viewed against natural daylight or bright indoor lighting, CommBox Horizon screen technology minimises reflections, ensuring your content is always viewed front and centre, without interrupting and distracting external light sources.

### Premium Touch Technology

Offering 50 active points of touch and zero premium quality bonding capabilities and touch accuracy to 1mm, and response times >5ms.

### Premium Differentiation

Touch and palm rejection, with enabled thick pen, thin pen and finger writing capabilities.

- Windows with Microsoft multi-touch Ink Support.
- MacOS Dual Gestures
- Chromium, Linux - Single Touch

### Premium Quality Sound

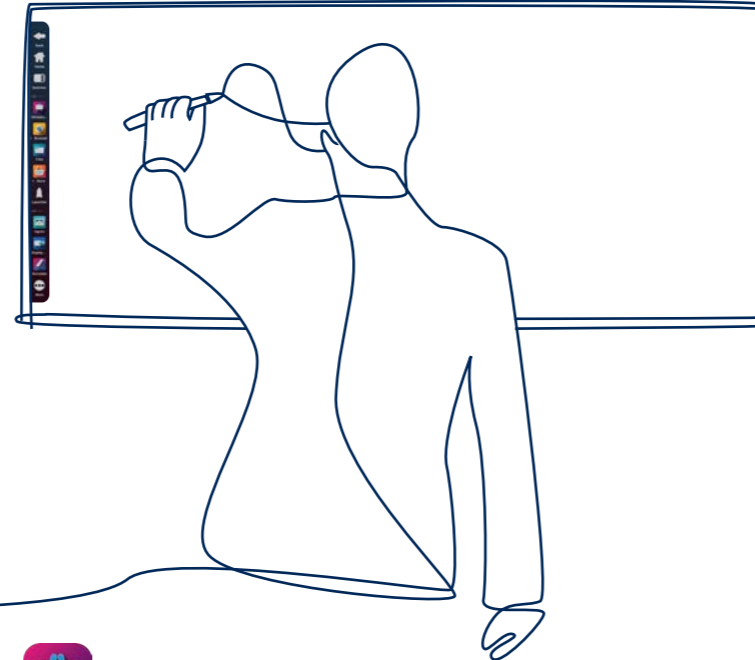
Powered by advanced 20W audio speaker technology and 8 array microphone with 8 metre pick-up, Horizon totally optimises the meeting space, delivering rich, clear, immersive sound with the benefits of a 15W subwoofer, ensuring impeccable balance and crisp sound delivery.

### Extensive Input Options

The Horizon range offers ultimate flexibility with an extensive range of input ports including x4 HDMI, one with 5K support, USB-C with charging capabilities, x6 USB ports including access points at top of screen.

## PACKED WITH INTERACTIVE FEATURES

Powered by CommBox OS Lite, built on Android 13 with a powerful 8GB RAM/64GB ROM compute, the feature rich operating system offers the following functionalities...



### CommBox Whiteboard

Interact, collaborate and ideate with ease using the premium whiteboard. The CommBox Horizon range features an infinite canvas that offers unparalleled freedom to annotate and create. With whiteboarding collaboration tools designed to accommodate individual preferences for ease of use, complementing stylus capabilities or just your finger. Brainstorm, plan, collaborate, and share, the hybrid and interactive ideation space has never been simpler.



### CommBox Store

Explore the extensive library of over 170 apps and web apps, each thoughtfully chosen to boost the capabilities of the CommBox Horizon range. The dedicated design team at CommBox carefully handpicks each app, combining our in-depth knowledge with valuable customer feedback, to ensure you have access to the most important and effective tools designed to suit your needs. The CommBox Store is your go-to hub, designed to enhance your interactivity.



### CommBox Browser

Built in browser capabilities - access to your chosen content is infinite, ready to search, view and share.



### Annotate Anywhere

With 50 points of touch, encouraging interactive shared engagement during meetings and presentations.

Integrated Microsoft Ink offers a flexible and intuitive way of collaborating no matter what industry.



### CommBox Display Centre

Enabling daisy chain | multiple displays



### Screen Record

Share now, share later or export. With powerful built-in microphones, record and capture your onscreen content and voiceover with ease, and export to your audience or cloud. Powered by CommBox OS lite on Android 13, with options for Windows or Google Workspace.



### Picture-in-Picture

Easily view two sources of content simultaneously on a single screen. Ideal for dynamic work environments, the Picture-in-Picture function ensures that you keep track of all necessary details without ever having to switch contexts.



### CommBox Manage

#### Secure cloud-based fleet management dashboard

Effortlessly manage your fleet of devices with CommBox Manage, the all-in-one cloud-based management solution. Manage all devices from a single, intuitive web-based dashboard, ensuring that your screens are always up-to-date and running smoothly.



## PERFECT IN-PERSON COLLABORATION SESSIONS



## COMMBX TOOLS

Manage workflow and presentations in a timely manner with integrated clock, timer and stopwatch tools. Plan and organise workshops, score and keep track in your whiteboarding workshops. Activate inspirational quotes relative to your team and make use of the onscreen practical calculator. Useful enabled tools include maps and location planning capabilities.



## OPTIMAL SCREENSHARING FEATURES

### CommBox Connect

A feature-rich, secure screen sharing application that enables users to share their personal screens in real-time with other devices and platforms. CommBox Connect supports native protocols including; Miracast, Airplay and Chromecast, whilst also providing additional features within the CommBox Connect app for your chosen personal device.

### Broadcast

Easily share content from one CommBox Horizon to another CommBox display within the same conference or learning space.

### Desktop Sync

Send content on the Horizon Screen directly to personal devices, a useful advantage within the learning a presentation space.



## PLUG & PLAY COMPATIBILITIES

### UC Vendor Enabled

Engineered to support your choice of advanced meeting room solutions. The Horizon range has been rigorously tested with the world's leading UC Vendors. With an agnostic OS, the Horizon range adapts perfectly with Microsoft Teams Rooms & Zoom Rooms using compatible

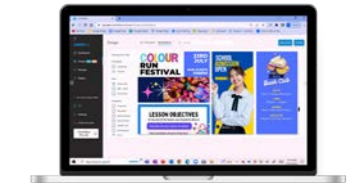


### Additional Options

Extend the functionality of your screen.



**Windows User Experience**  
Add a Slot-in-PC & Windows User Experience can be easily added.



**CommBox Signage**  
An intuitive 'drag and drop' system. Within minutes, design professional looking signage.



## WHY CHOOSE HORIZON

### CYBER SECURITY

CommBox products, including CommBox OS lite, Connect, Manage, and Signage, are designed with security as the foundational pillar, ensuring the confidentiality, integrity, and availability of company data. All CommBox software engineers are members of OWASP, have completed Secure Development Training and develop according to the OWASP Top 10 Standard.

At the core of CommBox security philosophy is the implementation of industry best practices with an holistic approach to safeguarding operations, emphasising prevention, secure software development, and recognised operational standards.

CommBox has implemented the CIS (Centre of Internet Security) Controls SME's across the organisation and as a result undertakes rigorous security testing, including threat modelling, automated scanning, and third party audits, to ensure robustness of our internal IT infrastructure and CommBox products. CommBox is a member of AusCERT.

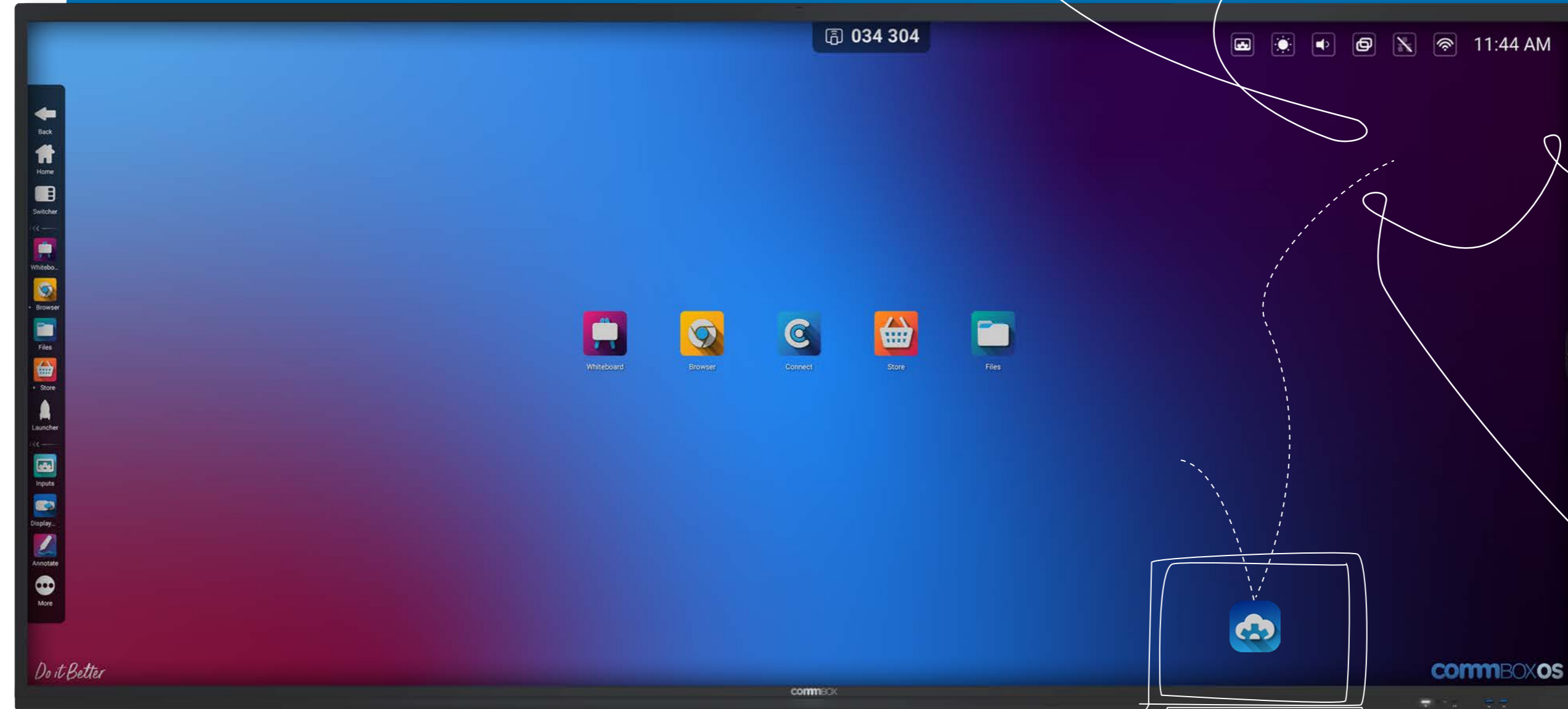
### INSTALLATION AND MAINTENANCE

#### Easy Installation

Install without fuss. The CommBox Horizon offers a simple set-up process that allow you to quickly configure the screen. The narrow bezel allows for seamless integration into any environment with easy-to-use mounting options.

#### Easy Maintenance

No maintenance required. Firmware updates are done over the air.



### REMOTE MANAGEMENT

With a 7 Year FREE Licence, effortlessly manage your fleet of devices with CommBox Manage, the all-in-one secure cloud-based management solution. Centrally monitor, manage and support your CommBox interactive touchscreens and displays.

The intuitive web-based secure dashboard, ensures that your screens are always up-to-date and running smoothly.

Use CommBox Manage to manage the device after installation, the perfect all-in-one solution for managing screens. CommBox Manage is also compatible with other devices such as laptops, tablets, smartphones and more.



## SUSTAINABILITY

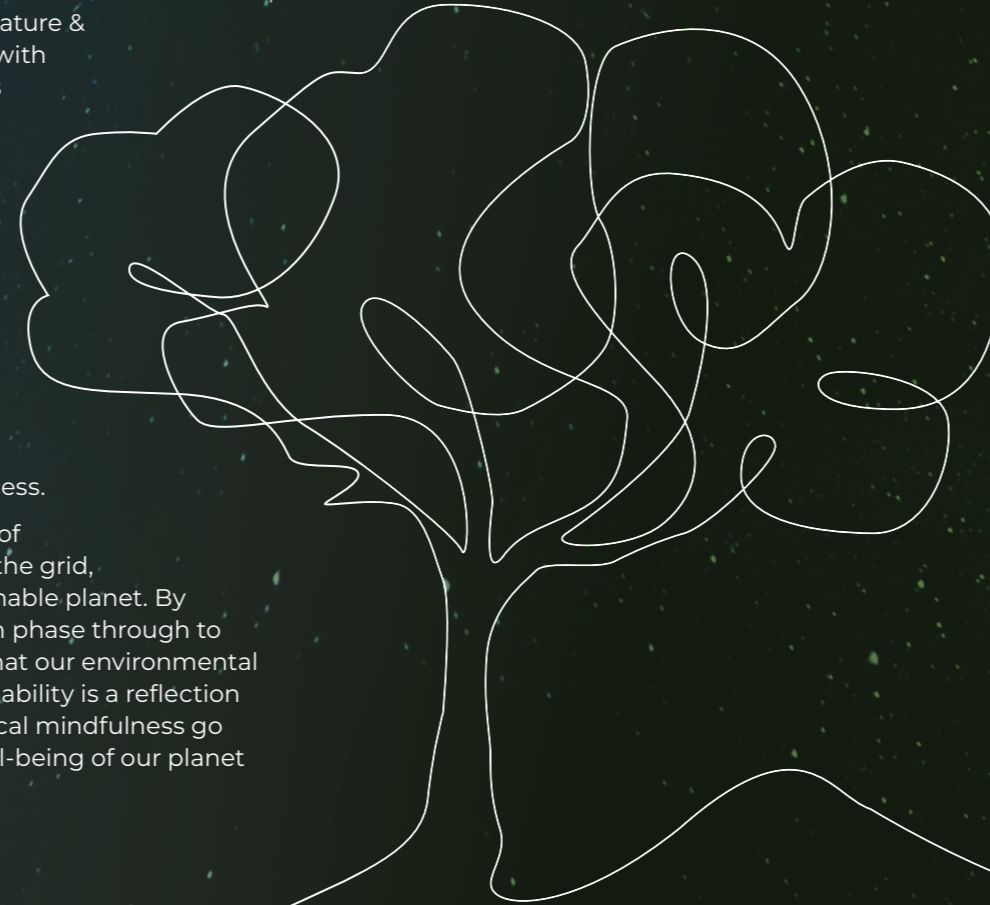
The CommBox Horizon display comes in recyclable packaging, has energy saving features and complies with restriction guidelines for hazardous substances such as RoHS and REACH.

### Environmental Considerations

CommBox displays are designed with energy efficiency in-mind. With dedicated design in reducing energy emissions and considered environmental footprint which extends to include structural considerations during manufacture of controlled emissions, controlled power-on heat dispersion, regulated temperature & EMI Shielding. The CommBox Horizon range complies with restriction guidelines for hazardous substances such as RoHS and REACH.

CommBox is passionately dedicated to sustainability and environmental stewardship, intricately weaving these principles into the fabric of our product design and development. Our commitment extends beyond the use of recyclable materials; we are continually innovating in technology to enhance energy efficiency, thereby reducing both our environmental impact and the operating costs for our clients. A cornerstone of our sustainability strategy is our collaboration with factory partners who harness renewable solar energy during the manufacturing process.

These partners not only minimise the carbon footprint of production but also contribute surplus energy back to the grid, amplifying our collective efforts towards a more sustainable planet. By integrating these sustainable practices from the design phase through to the end of our products' lifecycle, CommBox ensures that our environmental responsibilities are upheld. Our commitment to sustainability is a reflection of our vision for a future where technology and ecological mindfulness go hand in hand, demonstrating our dedication to the well-being of our planet and future generations.



## COMMBOX COMMITMENT TO COMMUNITY

The partnership between CommBox and key reseller partners represents a pioneering initiative to re-purpose interactive touchscreens for remote First Nations communities, a testament to our commitment to creating equitable access to technology and education. This collaboration not only breathes new life into technology but also opens doors to a world of interactive learning and connectivity that was previously out of reach for these communities.

For further information, please visit:  
[commbox.com.au/commbox\\_commitment\\_to\\_community](http://commbox.com.au/commbox_commitment_to_community)







## THE COMMBOX EXPERIENCE

At CommBox, we believe the experience is just as important as the product itself. That is why we offer The CommBox Experience. An unparalleled level of care and support sets us apart from other screens. Our local support team is available to help you every step of the way, by providing expert training, guidance and troubleshooting whenever you need it. With a guarantee same-day response if you get in-touch before 3pm AEST. Plus, with our 5 Year onsite swap-out warranty, you can set knowing your investment is protected.

At CommBox, we are committed to ensuring that you have the best possible experience with our products, and we're always here to help you get the most out of your screen.



Subscription Free



True onsite swap out warranty



Trust and Security



Include Free Virtual Training



Live Chat Support Comprehensive Knowledge Base



“The CommBox experience is what sets us apart. We want to wow our customers in every moment, from the cool modern design aesthetic of our products to the installation experience and the after-sale support. We are the key to this experience. Everything we do matters and we pride ourselves in providing this experience to each other and to our customers.”

Nicholas Hall  
Chief Executive Officer



*Do it better*

Transforming meeting & learning spaces since 1976.  
Australian Designer & Manufacturer of Collaboration Technology.

**comm**BOX